



Burnham Close, SE1 5RL

Guide Price £350,000 to £375,000. A unique freehold semi-detached house in the heart of ever so popular Bermondsey, a short stroll from a plethora of local cafes, restaurants, grocery shops, as well as the greenery of Burgess Park. The house features a naturally bright living room with plenty of storage space, and a contemporary kitchen downstairs. Upstairs is the generous bedroom and a stylish bathroom. Additional benefits are the access to loft space and residents car parking. The property is ideal for escaping the business of the city without giving up the privilege to live in the heart of London.

Freehold

A contribution of £982.86 per annum is due to maintain the communal grounds. Council Tax Band C

Some of this picture have been virtually staged.
Figures may vary. Please double check all figures and floorplan accuracy with your surveyor and conveyancer.

- One Bedroom Freehold House
- Recently Renovated Kitchen and Bathroom
- West Facing Garden
- Residents Car Parking
- Tranquil Residential Setting
- Naturally Bright
- Electric Underfloor Heating in Bathroom

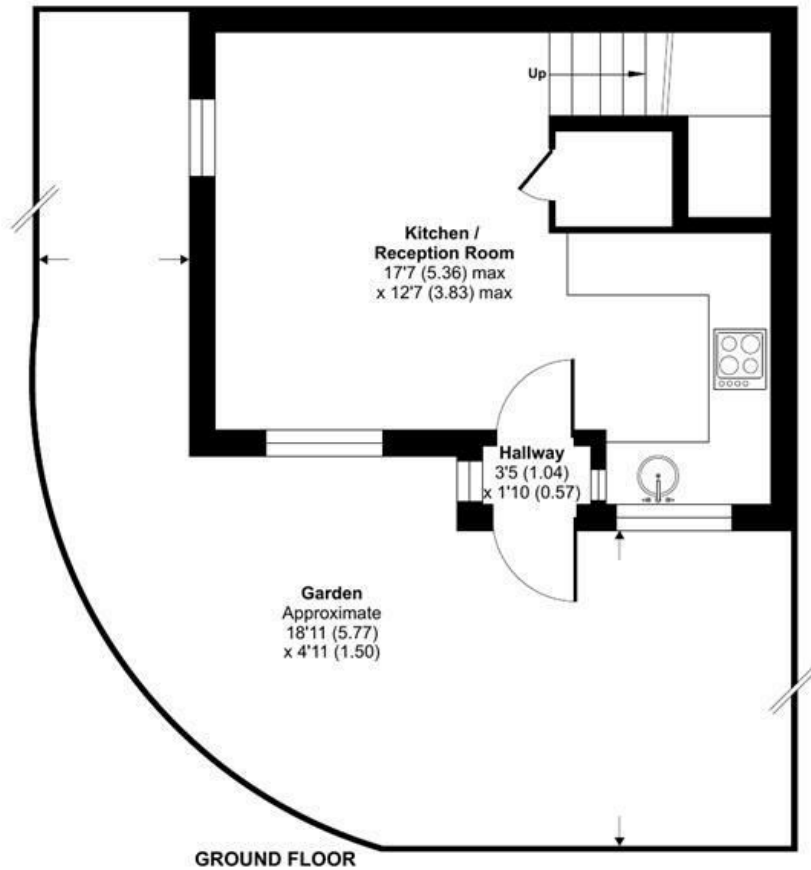
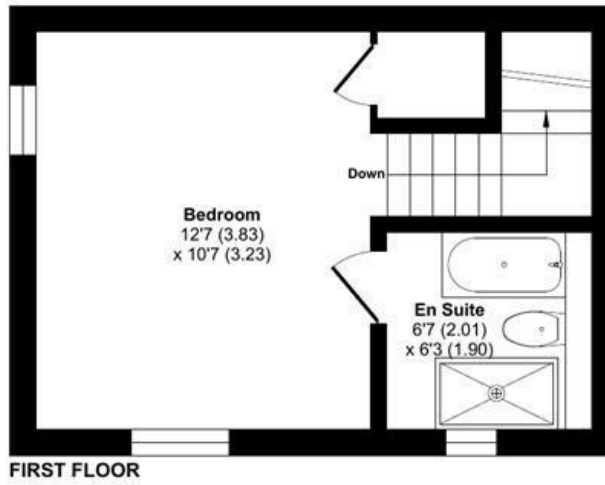
Alex & Matteo
ESTATE AGENTS

Guide price £350,000

Burnham Close, London, SE1

Approximate Area = 464 sq ft / 43.1 sq m

For identification only - Not to scale



Alex & Matteo
ESTATE AGENTS



Floor plan produced in accordance with RICS Property Measurement 2nd Edition, Incorporating International Property Measurement Standards (IPMS2 Residential). © nñche.com 2025. Produced for Alex & Matteo Estate Agents. REF: 1266748

Energy Efficiency Rating		
	Current	Potential
Very energy efficient - lower running costs		
(92 plus) A		92
(81-91) B		
(69-80) C		
(55-68) D	60	
(39-54) E		
(21-38) F		
(1-20) G		
Not energy efficient - higher running costs		
England & Wales		
EU Directive 2002/91/EC		